

Tivoli Manufactured Stone

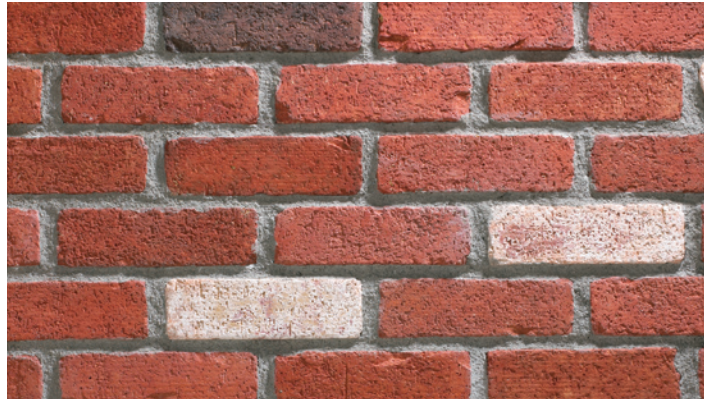
Cambridge Brick

SPECIFICATIONS

Flats	Corners	Packaging
Thickness 1 1/8"	Thickness 1 1/8"	150 sq. ft. large box
Length 7 1/2"	Length long 7 1/2"	15 sq. ft. small box
Height 2 1/8"	Length short 3 1/2"	150 linear ft. large box
	Height 2 1/8"	15 linear ft. small box



Ivory Coast



Nashville



Cabernet



Port of Bordeaux



Bryce Canyon



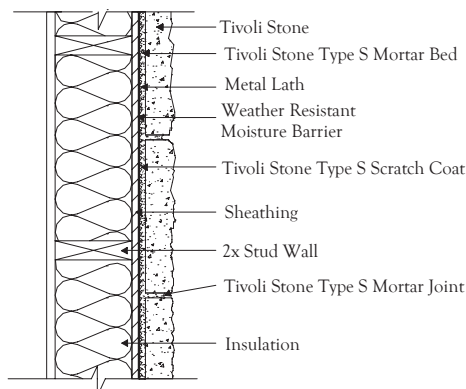


Tivoli Manufactured Stone Veneer Technical Data

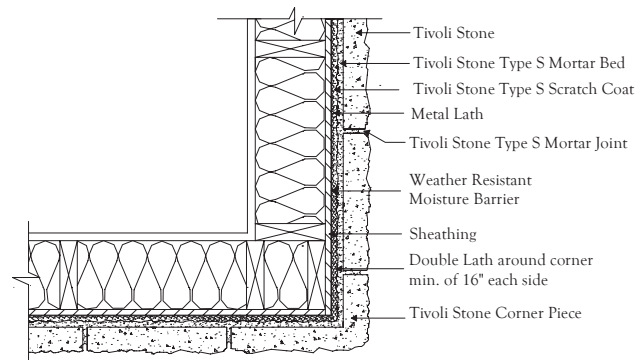
Tivoli Manufactured Stone is typically 20% lighter and 20% stronger than what is currently in the market. With our state of the art molding process our stone replicates natural stone with phenomenal detail.

Tivoli Manufactured Stone Veneer is designed to meet or exceed standard building code requirements. The following are test results of our stone products:

Density:	59.5 PCF	Tested in accordance with ASTM C567
Compressive Strength:	3000 psi	Tested in accordance with ASTM C39
Absorption:	14.5%	Tested in accordance with UBC Standard No. 15-5
Tensile Strength:	300 psi	Tested in accordance with ASTM C190
Flexural Strength:	500	Tested in accordance with ASTM C348
Shear Bond:	50 psi	Tested in accordance with ASTM C482
Thermal Resistance:	R factor .65 (varies in stone thickness)	Tested in accordance with ASTM C177-71



Tivoli Stone over Sheathing over Wood Studs



Tivoli Stone Outside Corner Detail over Sheathing over Wood Studs