

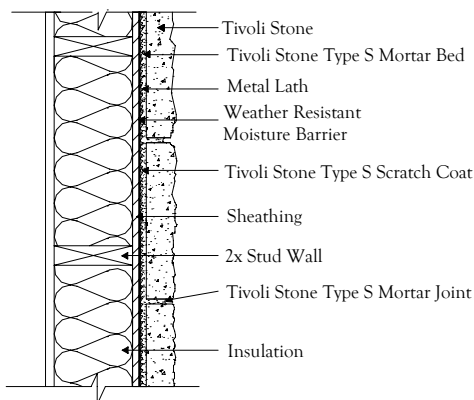


# Tivoli Manufactured Stone Veneer Technical Data

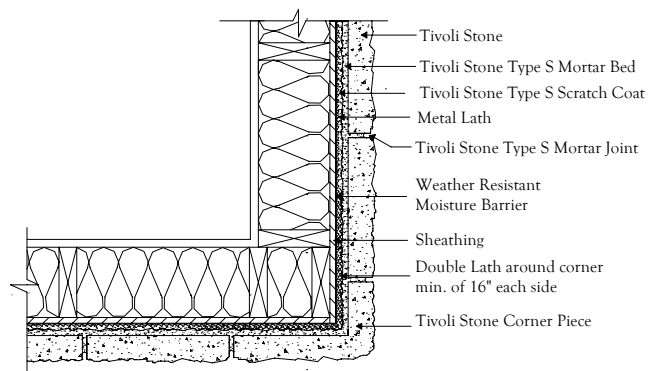
**Tivoli Manufactured Stone is typically 20% lighter and 20% stronger than what is currently in the market. With our state of the art molding process our stone replicates natural stone with phenomenal detail.**

**Tivoli Manufactured Stone Veneer is designed to meet or exceed standard building code requirements. The following are test results of our stone products:**

Density:	59.5 PCF	Tested in accordance with ASTM C567
Compressive Strength:	3000 psi	Tested in accordance with ASTM C39
Absorption:	14.5%	Tested in accordance with UBC Standard No. 15-5
Tensile Strength:	300 psi	Tested in accordance with ASTM C190
Flexural Strength:	500	Tested in accordance with ASTM C348
Shear Bond:	50 psi	Tested in accordance with ASTM C482
Thermal Resistance:	R factor .65 (varies in stone thickness)	Tested in accordance with ASTM C177-71



Tivoli Stone over Sheathing over Wood Studs



Tivoli Stone Outside Corner Detail over Sheathing over Wood Studs